

1. Wildflower Wrap

Finished Size

210 cm long and 50 cm wide, after blocking

Materials

- This wrap is knitted with a sport weight yarn for the body of the wrap and a single fingering for the borders.
- Approx 3 skeins of sport weight 300 m/ 100g for the body of the wrap (CP) and 26g of single fingering 366m/ 100g for the borders (CC).
- needles 4 mm (US 6)
- 2 st markers
- Sts holders

Gauge

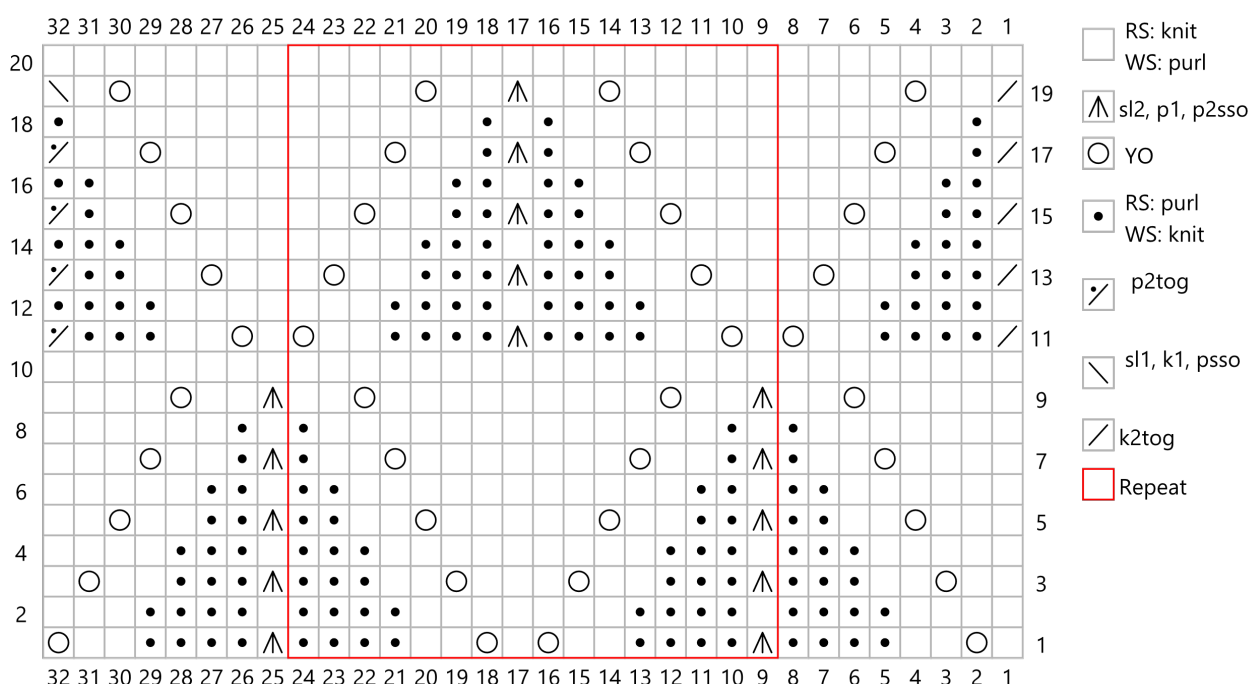
22 sts and 32 rows to 10 cm in lace for body on 4 mm (US 6) after blocking

Techniques

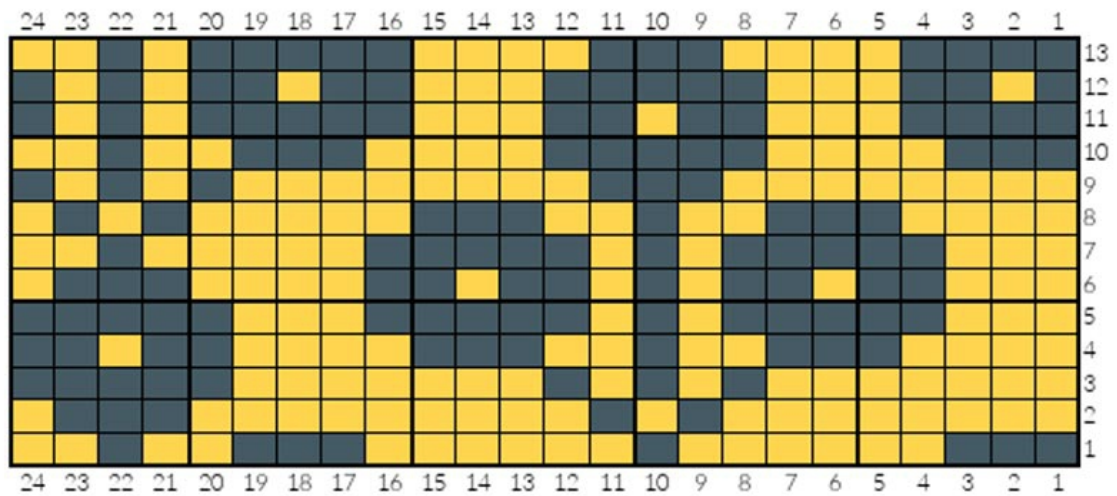
Provisional cast on: <https://www.youtube.com/watch?v=iDT00MDbYyw>

Chart

It reads from right to left on RS and from left to right on WS.



2. Wallpaper Flower Sweater



COLORWORK CHART. YELLOW: MYTHICAL (MC) GREY: CORRODE (CC)

3. Ruffle Truffle Sweater

In Yarn section it should say:

Yarn: LITLG Singles

Cool Dawn: 5 (5, 5, 6) (6, 6, 6) (7, 7, 7) skeins of LITLG Singles

Sample is worked in colorway Cool Dawn in size 3 with intended ease of 2.5-5cm (1-2")

4. Page 49 – Winter Woods

In Yarn section it should say:

Earth Flax and Andisol